



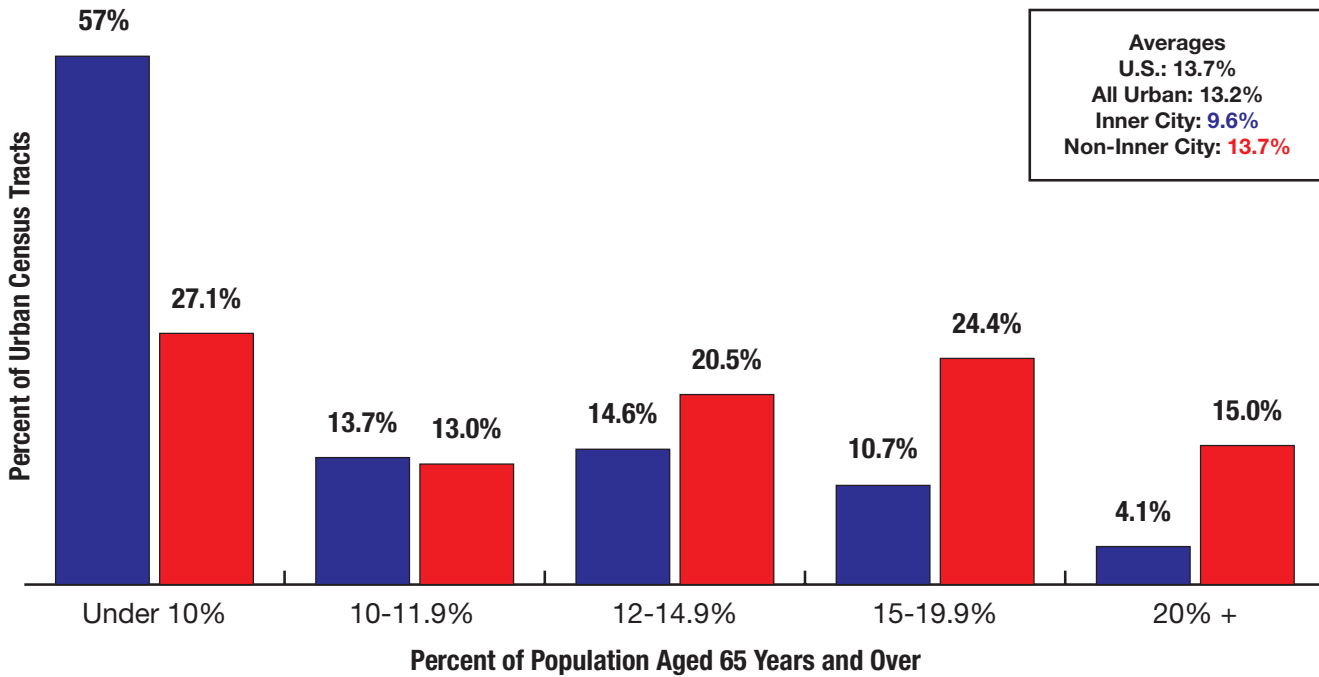
Task Force on Ensuring Access in Vulnerable Communities

Urban Chartbook

The task force defined a vulnerable community as a population that, due to their individual circumstances, is much more likely to be in poor health and have disabling conditions. They then worked to identify the characteristics and parameters that would identify such vulnerable rural and urban communities. In doing so, they relied upon personal experiences, as well as an analysis of financial data and other information from qualitative sources related to vulnerable rural and urban communities. This document contains metrics related to urban communities and the hospitals that serve them. For the full report, visit www.aha.org/ensuringaccess.

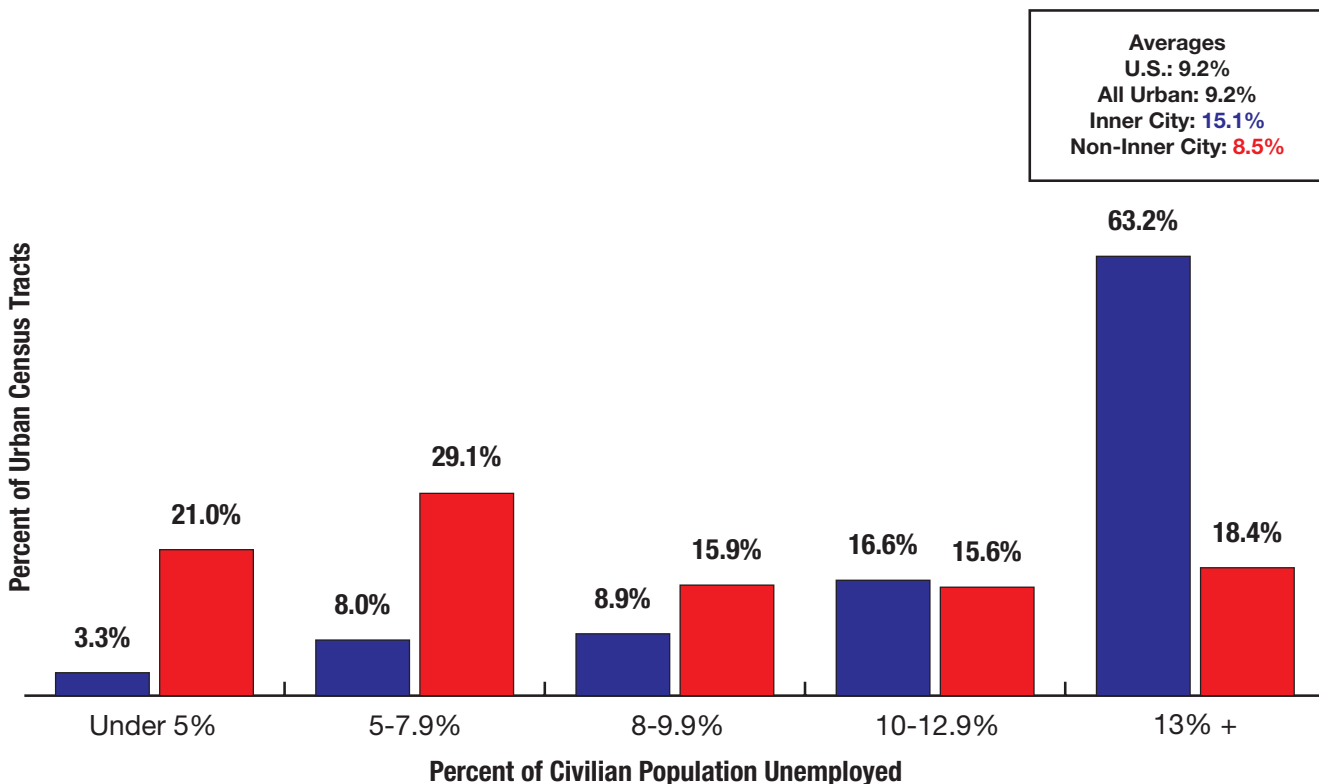


Percent of Urban Census Tracts by Population Aged 65 Years and Over



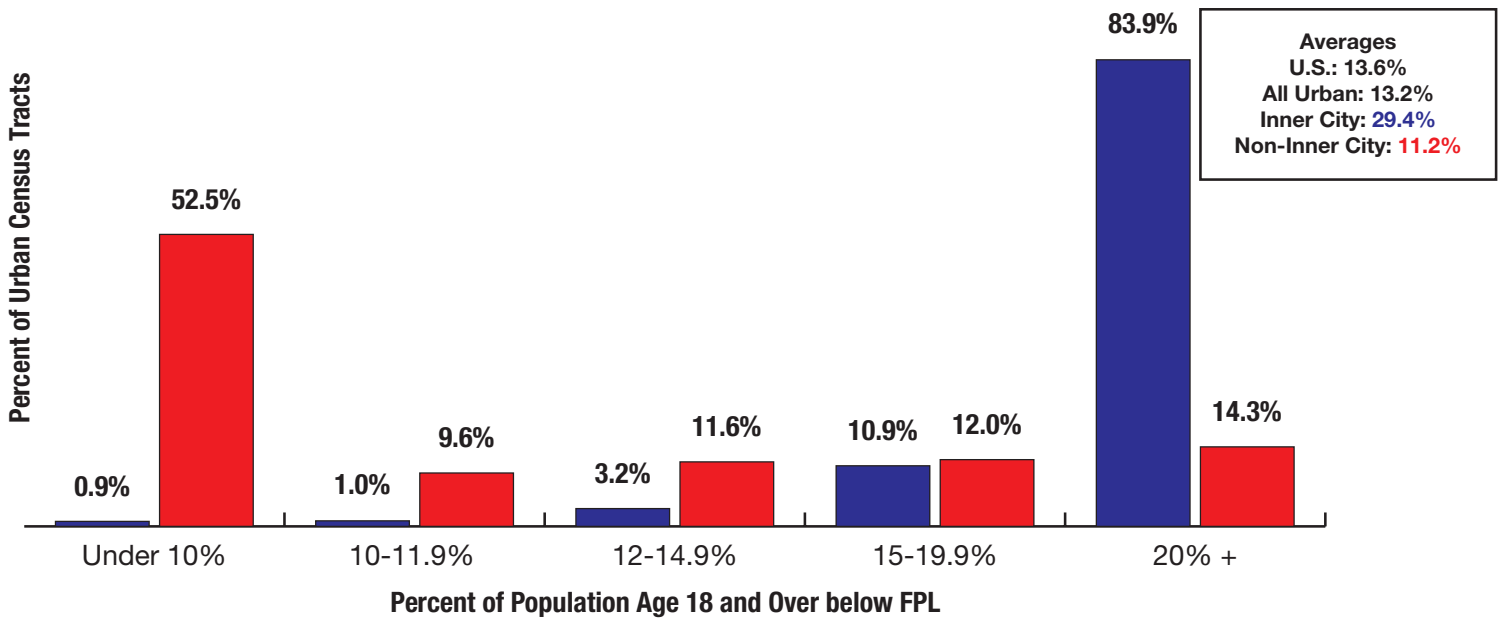
Source: State of the Inner City Economies (SICE) database, Initiative for a Competitive Inner City (ICIC). Notes: Inner cities are defined by ICIC using data from the U.S. Census Bureau's 2011 American Community Survey (ACS) 5-Year Estimate for all U.S. cities with populations greater than 75,000. The data in the chart are from the 2014 ACS 5-Year Estimate.

Percent of Urban Census Tracts by Percent of Unemployment



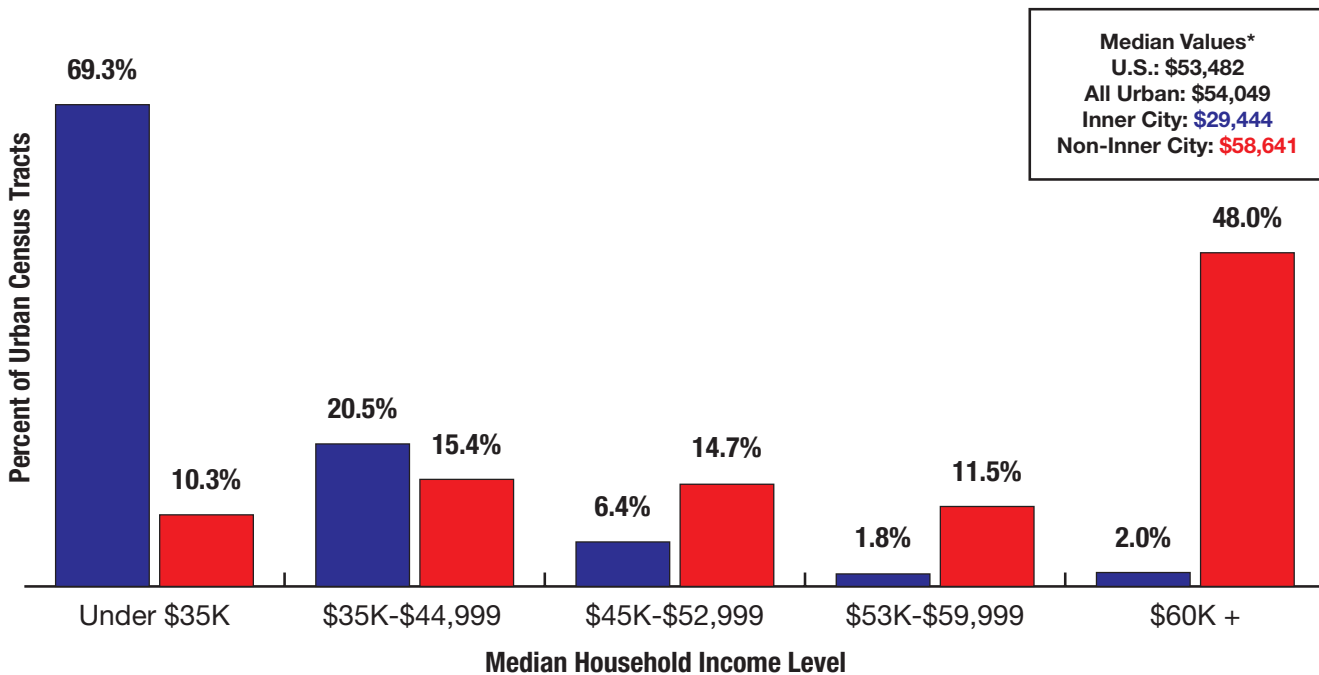
Source: State of the Inner City Economies (SICE) database, Initiative for a Competitive Inner City (ICIC). Notes: Inner cities are defined by ICIC using data from the U.S. Census Bureau's 2011 American Community Survey (ACS) 5-Year Estimate for all U.S. cities with populations greater than 75,000. The data in the chart are from the 2014 ACS 5-Year Estimate.

Percent of Urban Census Tracts by Population Age 18 & Over Below Federal Poverty Level



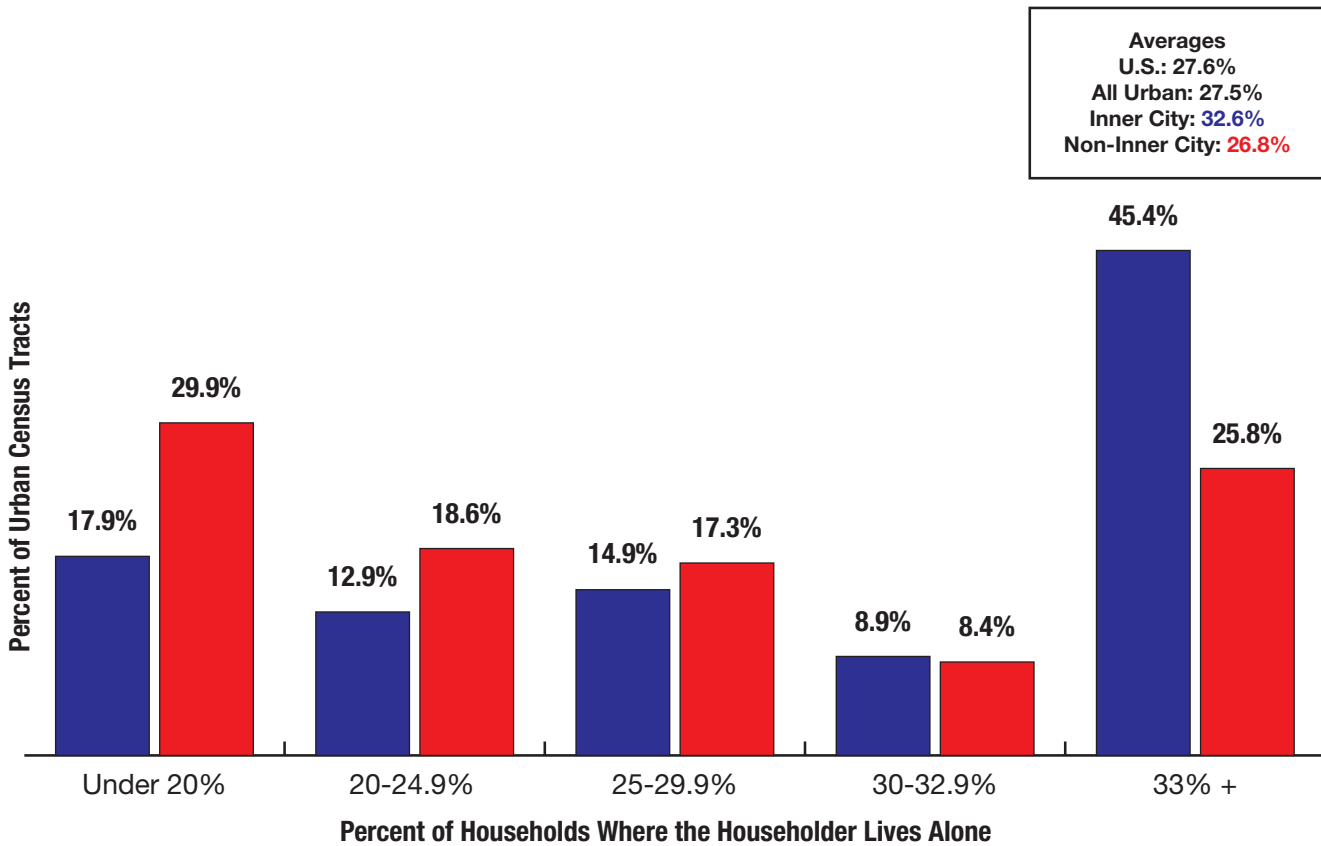
Source: State of the Inner City Economies (SICE) database, Initiative for a Competitive Inner City (ICIC). Notes: Inner cities are defined by ICIC using data from the U.S. Census Bureau's 2011 American Community Survey (ACS) 5-Year Estimate for all U.S. cities with populations greater than 75,000. The data in the chart are from the 2014 ACS 5-Year Estimate.

Percent of Urban Census Tracts by Median Household Income Level



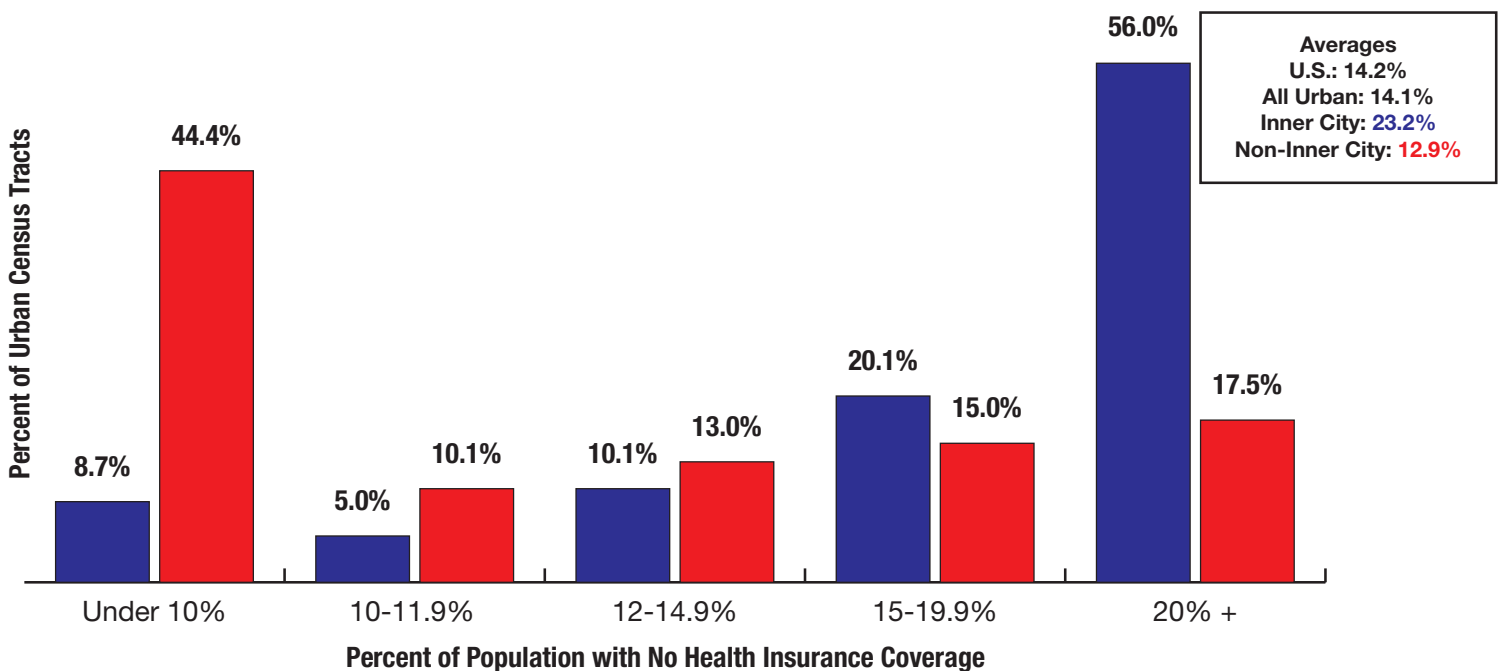
Source: State of the Inner City Economies (SICE) database, Initiative for a Competitive Inner City (ICIC). Notes: Inner cities are defined by ICIC using data from the U.S. Census Bureau's 2011 American Community Survey (ACS) 5-Year Estimate for all U.S. cities with populations greater than 75,000. The data in the chart are from the 2014 ACS 5-Year Estimate. * The U.S. median value is taken directly from the 2014 ACS 5-Year Estimate; however, all other median values are the medians of the individual census tract median household incomes for the relevant categories.

Percent of Urban Census Tracts by Households Where the Householder Lives Alone



Source: State of the Inner City Economies (SICE) database, Initiative for a Competitive Inner City (ICIC). Notes: Inner cities are defined by ICIC using data from the U.S. Census Bureau's 2011 American Community Survey (ACS) 5-Year Estimate for all U.S. cities with populations greater than 75,000. The data in the chart are from the 2014 ACS 5-Year Estimate.

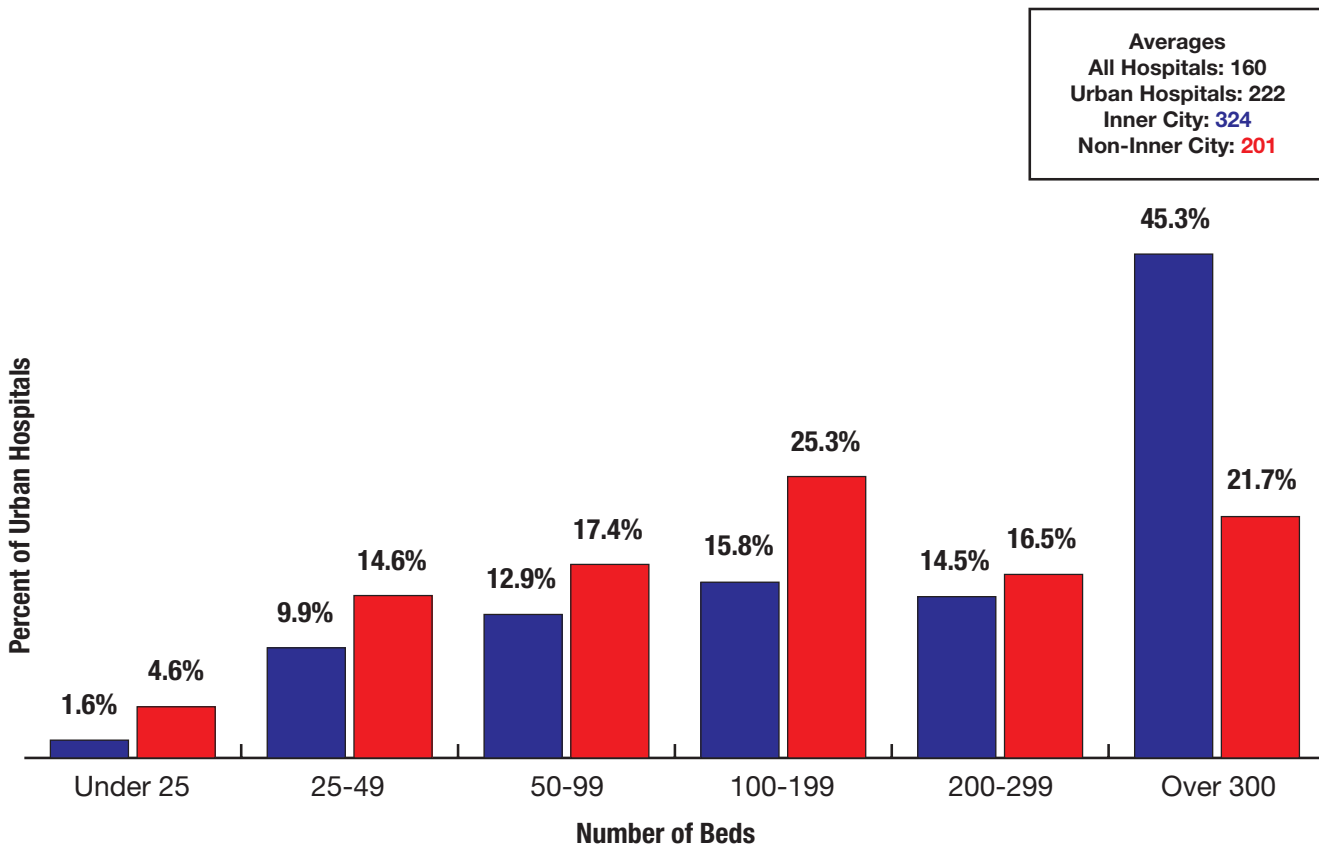
Percent of Urban Census Tracts by Population with No Health Insurance Coverage



Source: State of the Inner City Economies (SICE) database, Initiative for a Competitive Inner City (ICIC). Notes: Inner cities are defined by ICIC using data from the U.S. Census Bureau's 2011 American Community Survey (ACS) 5-Year Estimate for all U.S. cities with populations greater than 75,000. The data in the chart are from the 2014 ACS 5-Year Estimate.

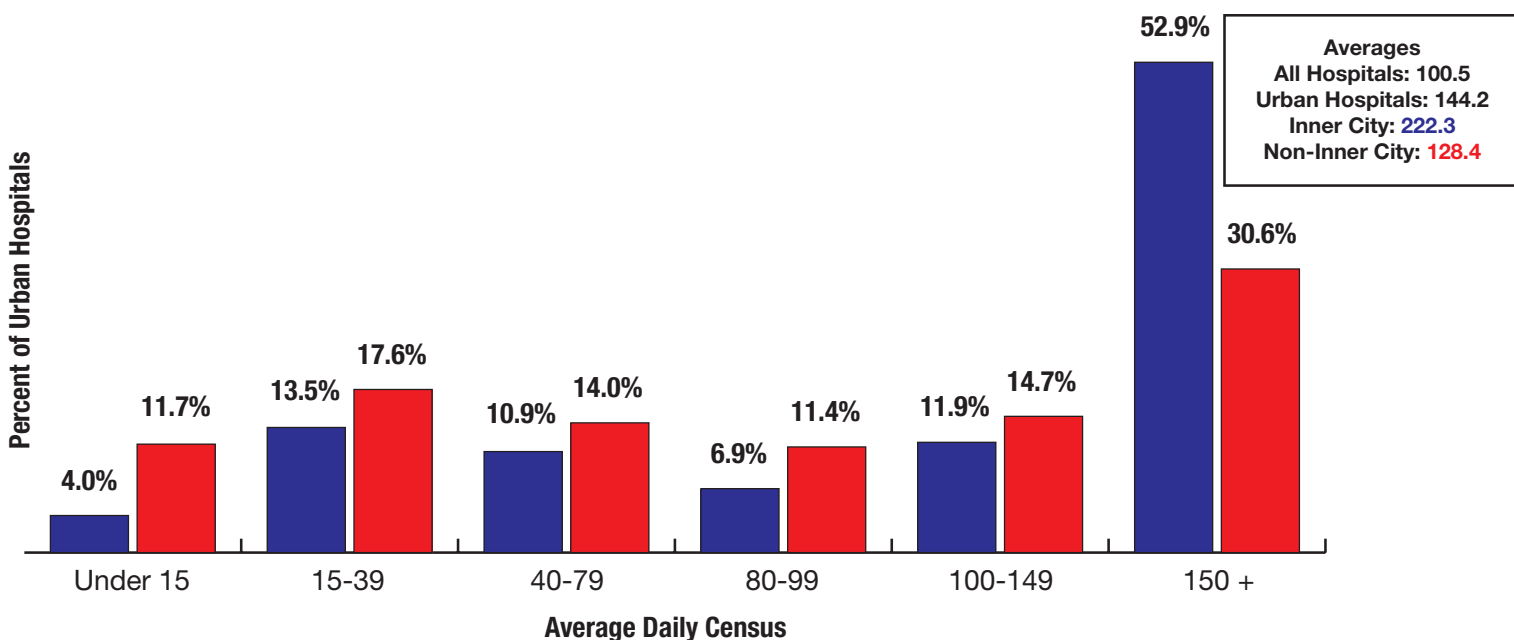
Data on Hospital Size

Percent of Urban Hospitals by Bed Size



Source: Health Forum, 2013 AHA Annual Survey of Hospitals. Inner cities are defined by Initiative for a Competitive Inner City using data from the U.S. Census Bureau's 2011 American Community Survey Averages

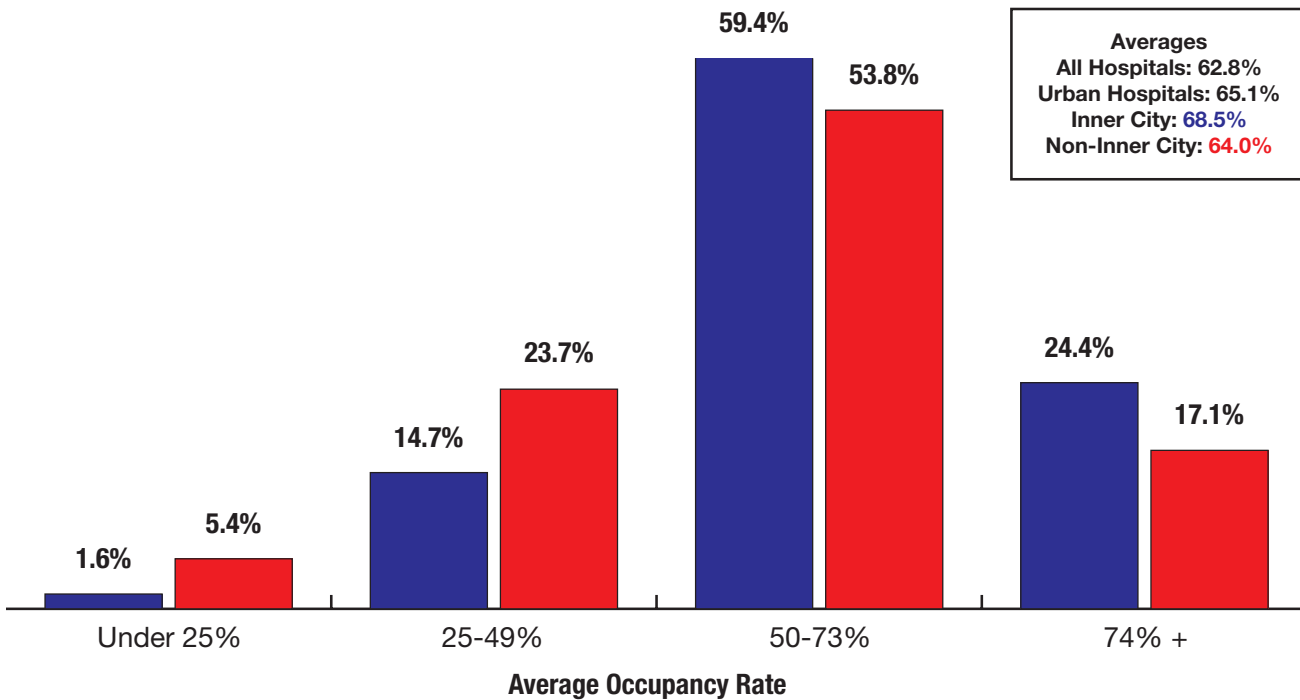
Percent of Urban Hospitals by Average Daily Census



Source: Health Forum, 2013 AHA Annual Survey of Hospitals. Inner cities are defined by Initiative for a Competitive Inner City using data from the U.S. Census Bureau's 2011 American Community Survey 5-Year Estimate for all U.S. cities with populations greater than 75,000.

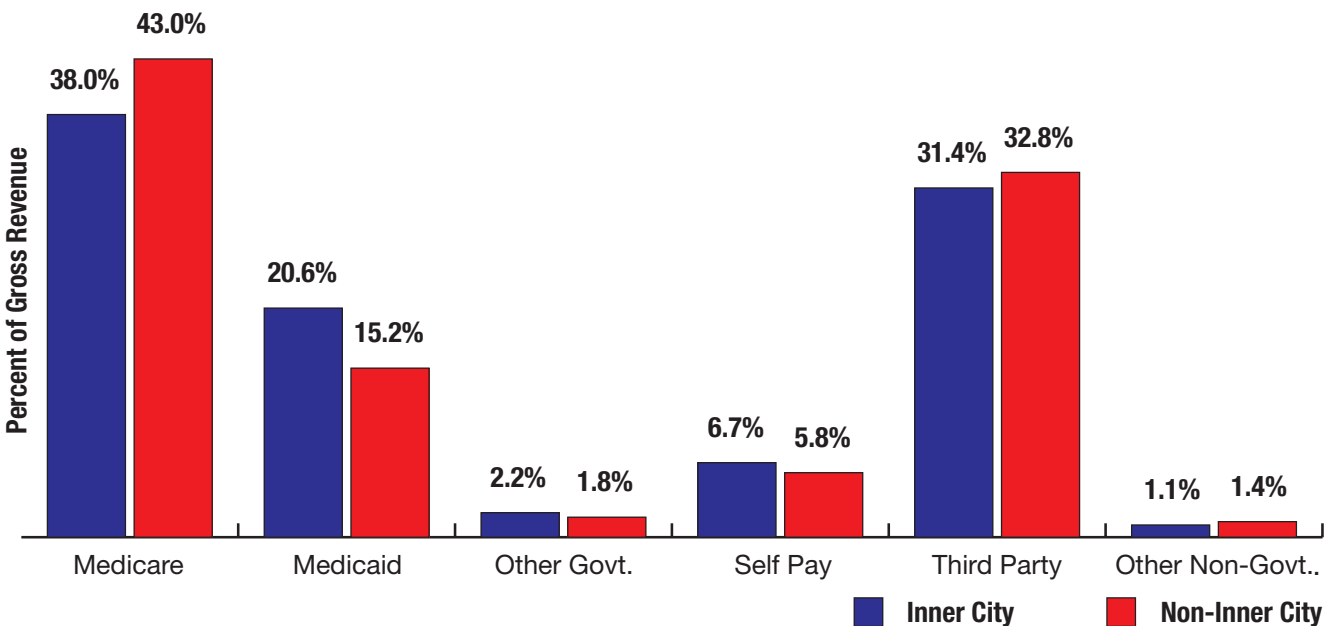
Data on Hospital Size

Percent of Urban Hospitals by Average Occupancy Rates



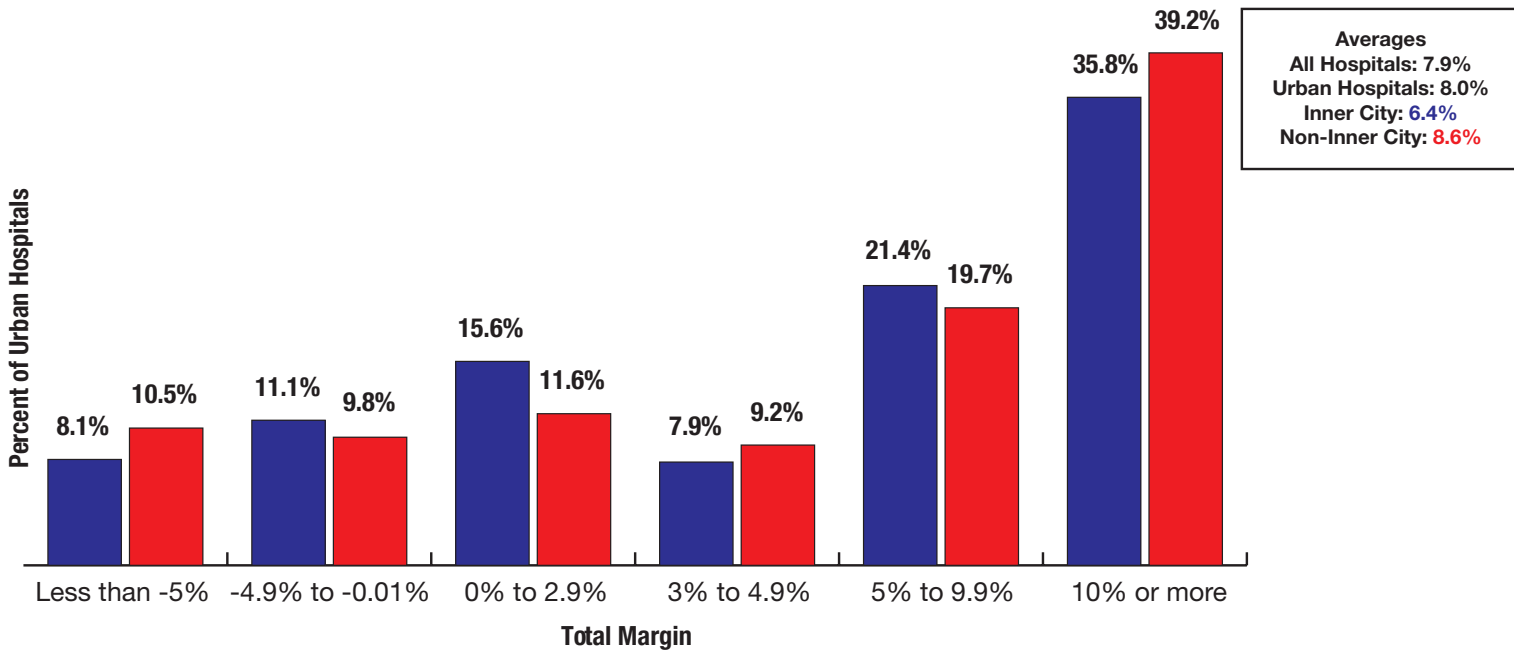
Source: Health Forum, 2013 AHA Annual Survey of Hospitals. Inner cities are defined by Initiative for a Competitive Inner City using data from the U.S. Census Bureau's 2011 American Community Survey 5-Year Estimate for all U.S. cities with populations greater than 75,000.

Percent of Gross Revenue by Payer Type for Urban Hospitals



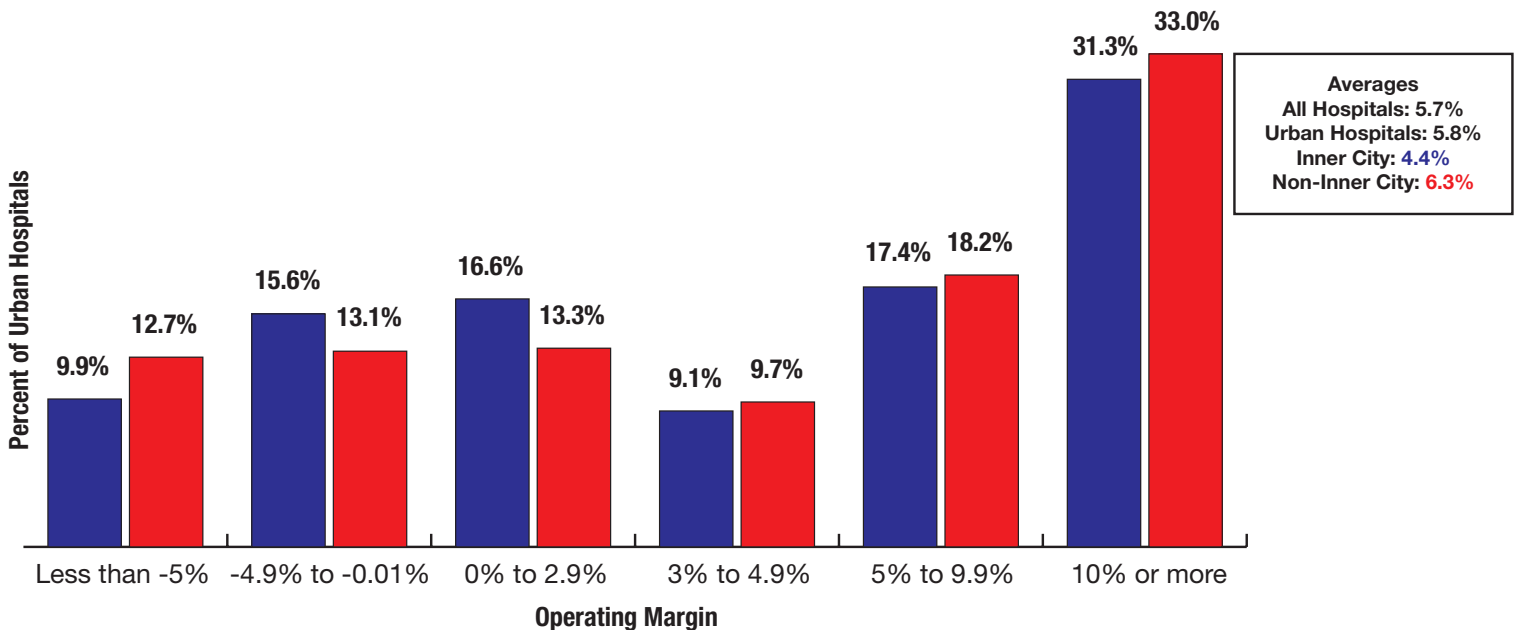
Source: Health Forum, 2013 AHA Annual Survey of Hospitals. Inner cities are defined by Initiative for a Competitive Inner City using data from the U.S. Census Bureau's 2011 American Community Survey 5-Year Estimate for all U.S. cities with populations greater than 75,000.

Percent of Urban Hospitals by Total Margin



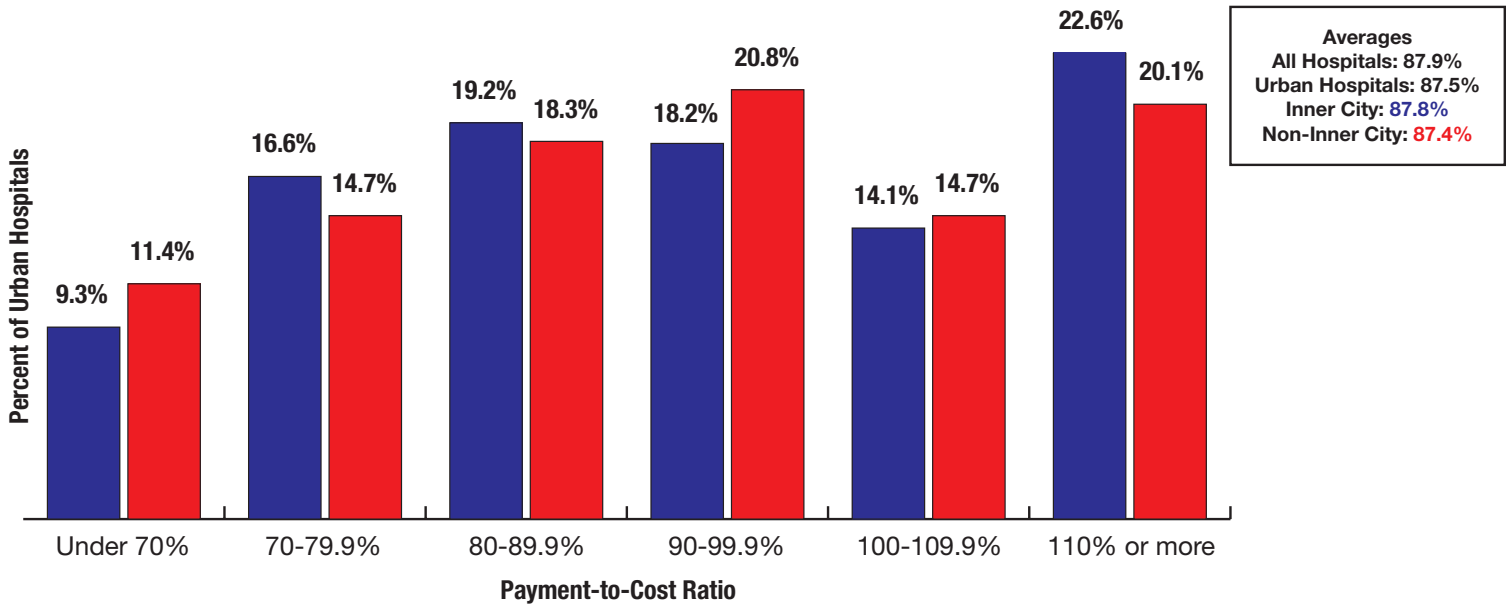
Source: Health Forum, 2013 AHA Annual Survey of Hospitals. Inner cities are defined by Initiative for a Competitive Inner City using data from the U.S. Census Bureau's 2011 American Community Survey 5-Year Estimate for all U.S. cities with populations greater than 75,000.

Percent of Urban Hospitals by Operating Margin



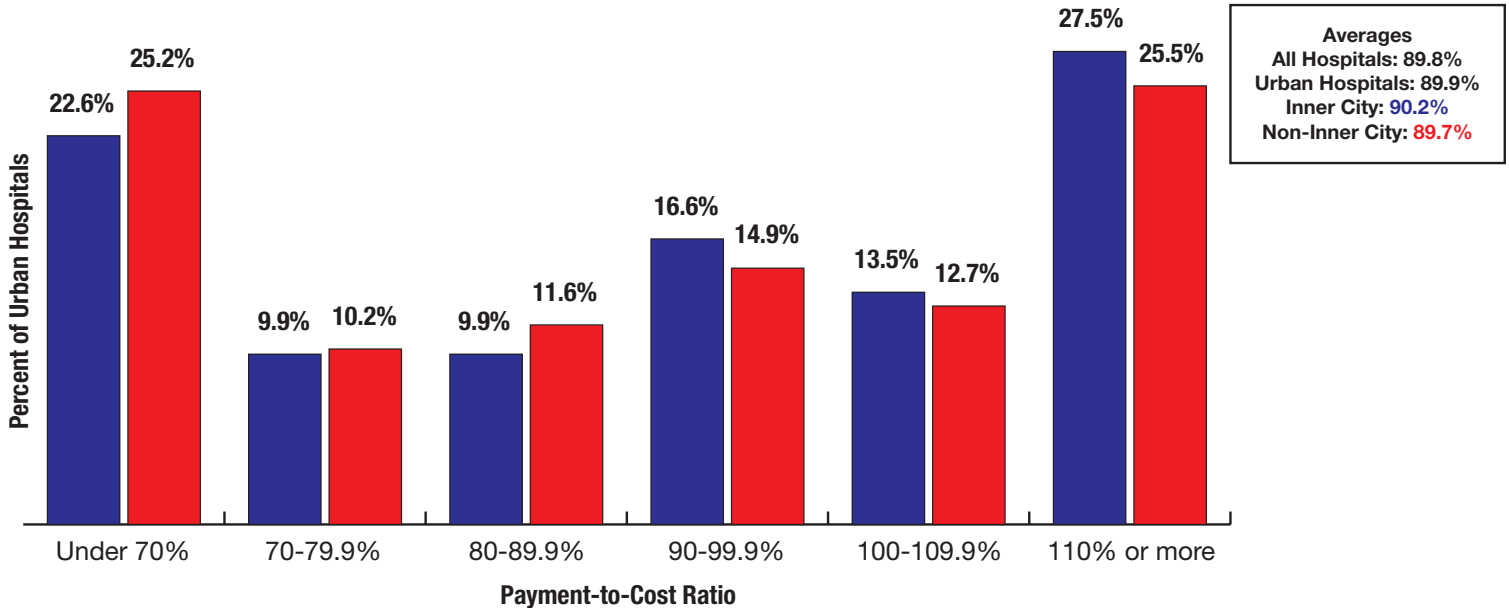
Source: Health Forum, 2013 AHA Annual Survey of Hospitals. Inner cities are defined by Initiative for a Competitive Inner City using data from the U.S. Census Bureau's 2011 American Community Survey 5-Year Estimate for all U.S. cities with populations greater than 75,000.

Percent of Urban Hospitals by Medicare Payment-to-Cost Ratio



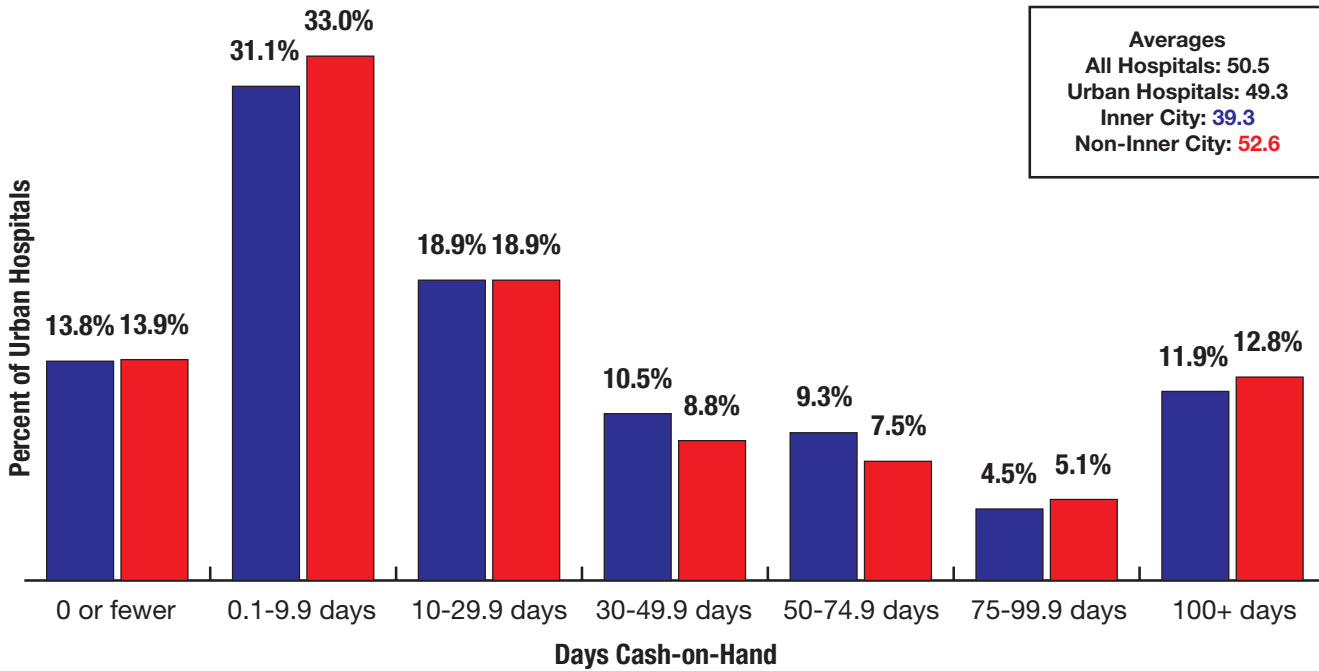
Source: Health Forum, 2013 AHA Annual Survey of Hospitals. Inner cities are defined by Initiative for a Competitive Inner City using data from the U.S. Census Bureau's 2011 American Community Survey 5-Year Estimate for all U.S. cities with populations greater than 75,000.

Percent of Urban Hospitals by Medicaid Payment-to-Cost Ratio



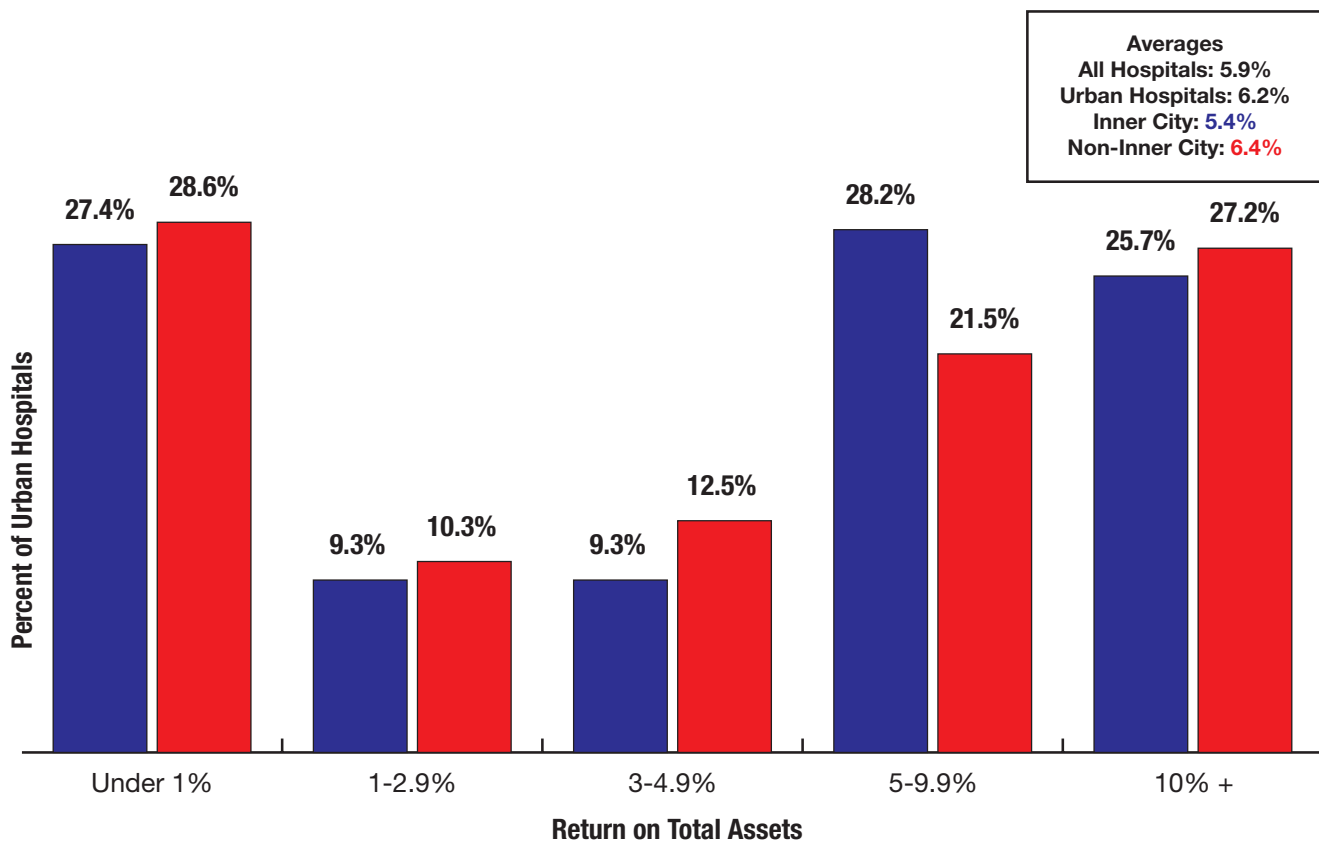
Source: Health Forum, 2013 AHA Annual Survey of Hospitals. Inner cities are defined by Initiative for a Competitive Inner City using data from the U.S. Census Bureau's 2011 American Community Survey 5-Year Estimate for all U.S. cities with populations greater than 75,000.

Percent of Urban Hospitals by Days Cash-on-Hand



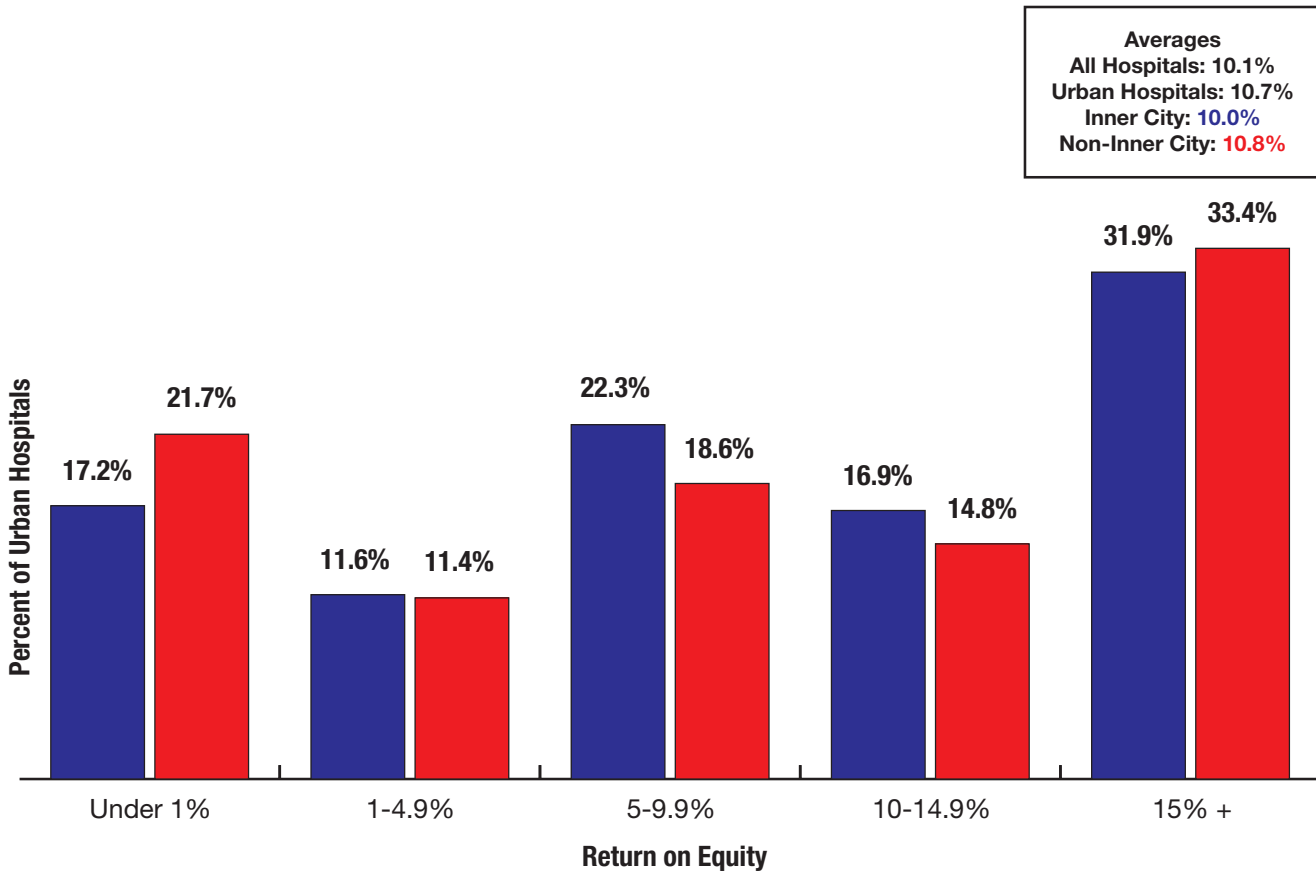
Source: Centers for Medicare and Medicaid Services, FY 2013 Medicare Cost Report Data, 4th Quarter 2015 data release. Inner cities are defined by Initiative for a Competitive Inner City using data from the U.S. Census Bureau's 2011 American Community Survey 5-Year Estimate for all U.S. cities with populations greater than 75,000.

Percent of Urban Hospitals by Return on Total Assets



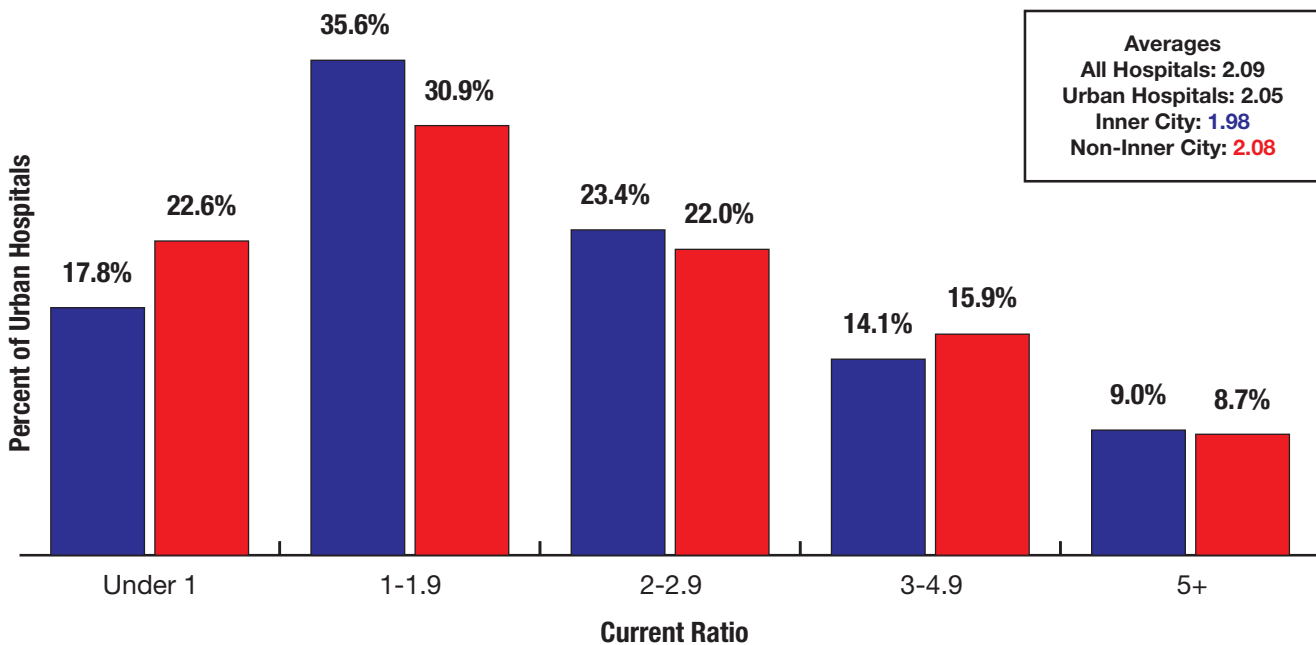
Source: Centers for Medicare and Medicaid Services, FY 2013 Medicare Cost Report Data, 4th Quarter 2015 data release. Inner cities are defined by Initiative for a Competitive Inner City using data from the U.S. Census Bureau's 2011 American Community Survey 5-Year Estimate for all U.S. cities with populations greater than 75,000.

Percent of Urban Hospitals by Average Return on Equity Ratio



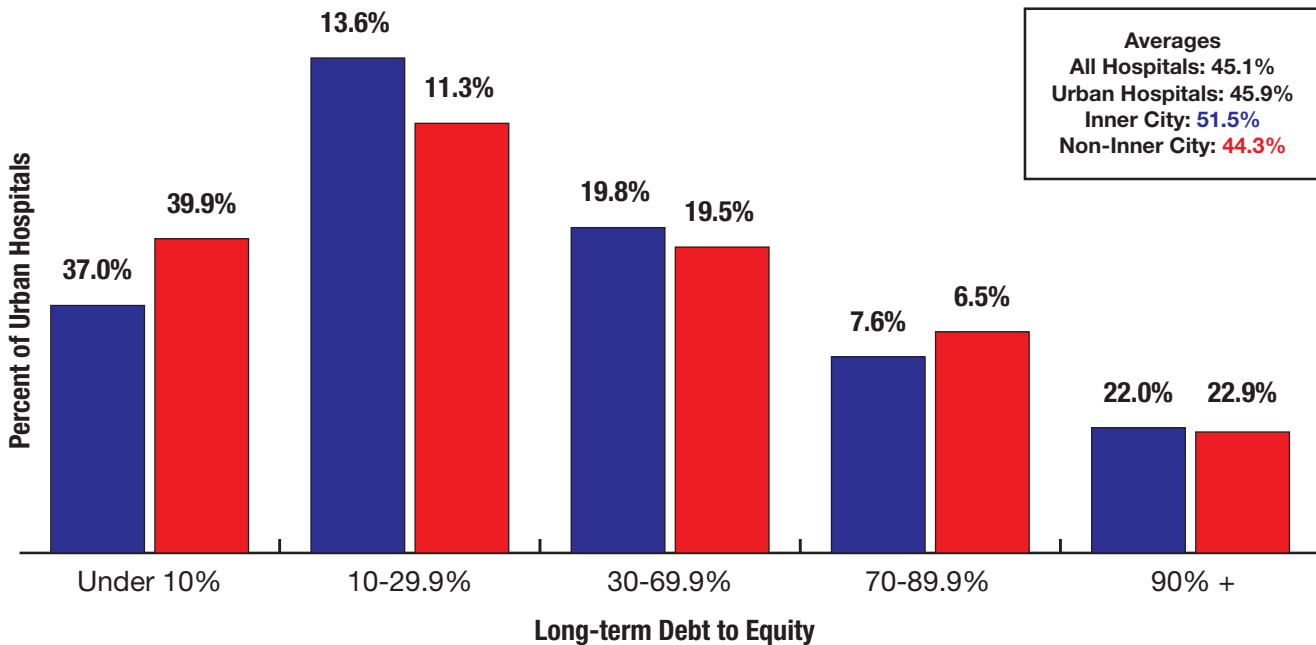
Source: Centers for Medicare and Medicaid Services, FY 2013 Medicare Cost Report Data, 4th Quarter 2015 data release. Inner cities are defined by Initiative for a Competitive Inner City using data from the U.S. Census Bureau's 2011 American Community Survey 5-Year Estimate for all U.S. cities with populations greater than 75,000.

Percent of Urban Hospitals by Current Ratio



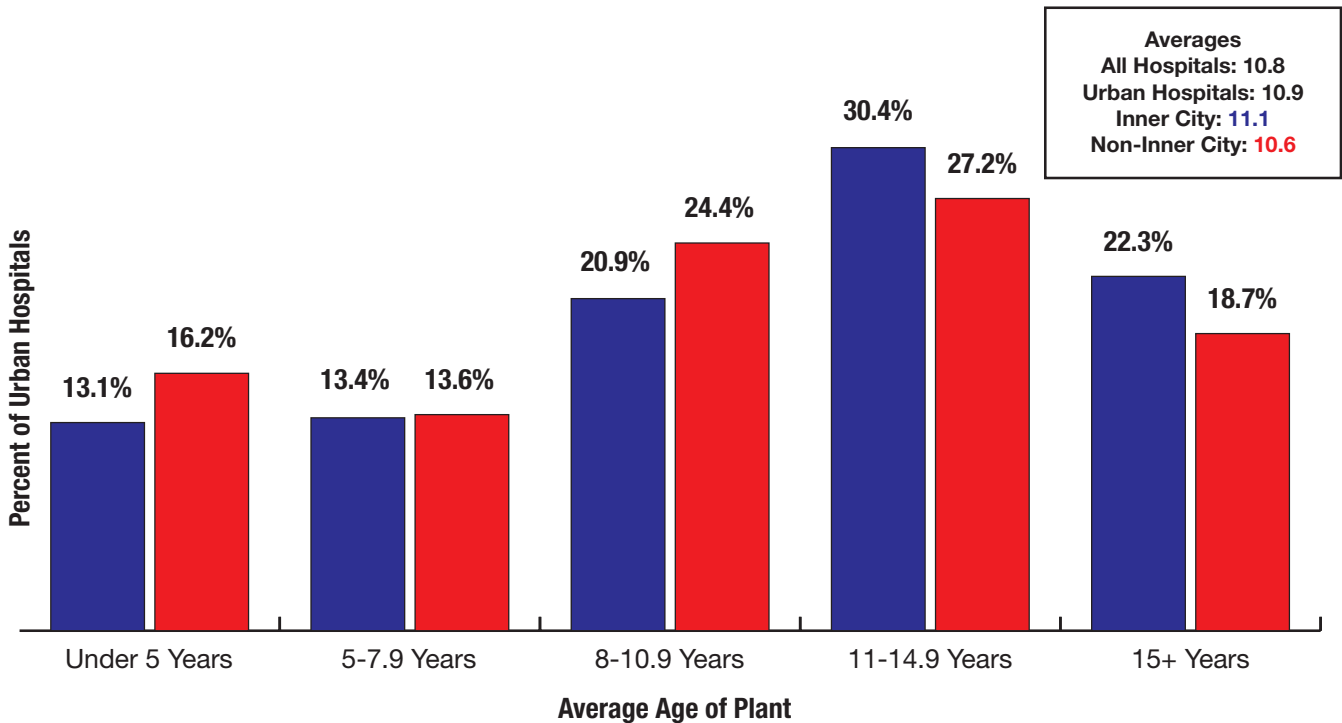
Source: Centers for Medicare and Medicaid Services, FY 2013 Medicare Cost Report Data, 4th Quarter 2015 data release. Inner cities are defined by Initiative for a Competitive Inner City using data from the U.S. Census Bureau's 2011 American Community Survey 5-Year Estimate for all U.S. cities with populations greater than 75,000.

Percent of Urban Hospitals by Long-term Debt to Equity



Source: Centers for Medicare and Medicaid Services, FY 2013 Medicare Cost Report Data, 4th Quarter 2015 data release. Inner cities are defined by Initiative for a Competitive Inner City using data from the U.S. Census Bureau's 2011 American Community Survey 5-Year Estimate for all U.S. cities with populations greater than 75,000.

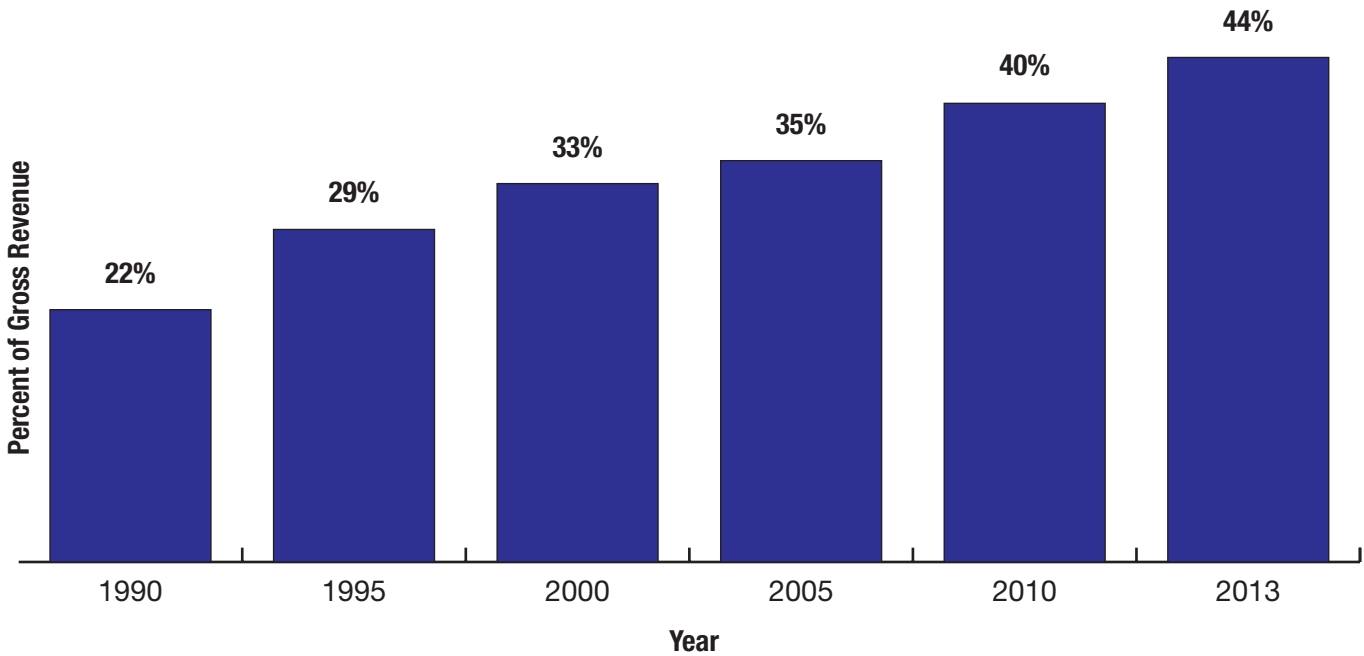
Percent of Urban Hospitals by Average Age of Plant



Source: Centers for Medicare and Medicaid Services, FY 2013 Medicare Cost Report Data, 4th Quarter 2015 data release. Inner cities are defined by Initiative for a Competitive Inner City Averages

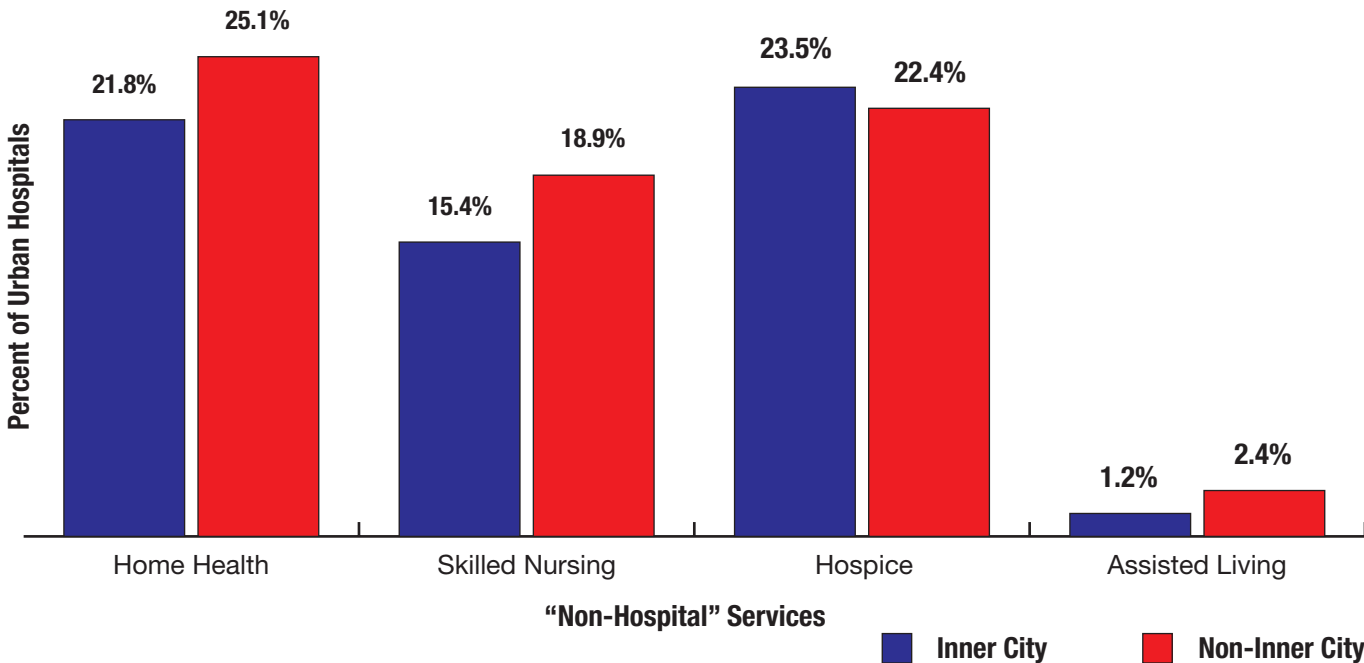
Data on Hospital Services

Outpatient as a Percent of Urban Hospital Total Gross Revenue



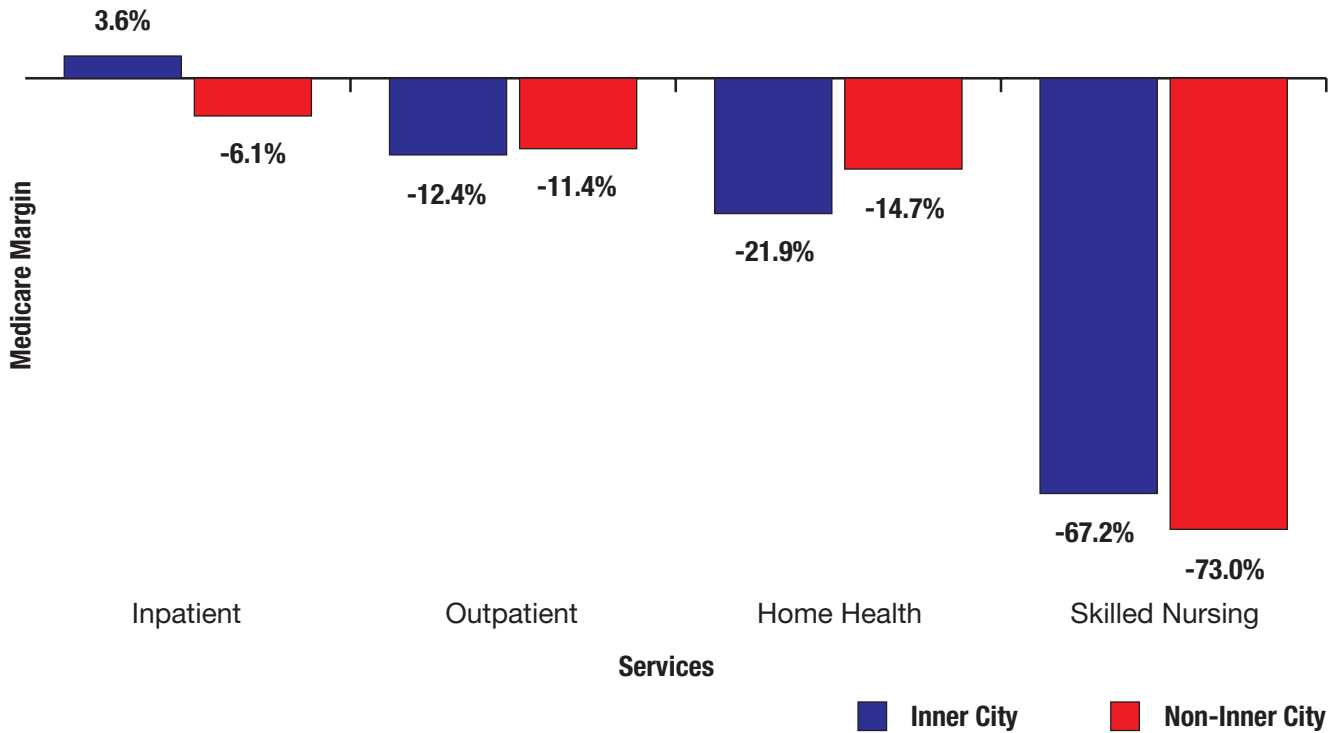
Source: Health Forum, 2013 AHA Annual Survey of Hospitals

Percent of Urban Hospitals offering "Non-Hospital" Services



Source: Health Forum, 2013 AHA Annual Survey of Hospitals. Inner cities are defined by Initiative for a Competitive Inner City using data from the U.S. Census Bureau's 2011 American Community Survey 5-Year Estimate for all U.S. cities with populations greater than 75,000.

Medicare Margins by Service for Urban Hospitals



Source: Vaida Health Data Consultants analysis of Centers for Medicare and Medicaid Services, HCRIS Database, September 30, 2014 Update. Uses Medicare cost accounting rules to determine allowable costs. Full assignment of costs using generally accepted accounting principles would result in lower margins. Inner cities are defined by Initiative for a Competitive Inner City using data from the U.S. Census Bureau's 2011 American Community Survey 5-Year Estimate for all U.S. cities with populations greater than 75,000.

Chicago Office:

155 N. Wacker Drive
Chicago, IL 60606
312.422.3000

Washington, D.C. Office:

800 10th Street, NW
Two CityCenter, Suite 400
Washington, DC 20001
202.638.1100

www.aha.org/ensuringaccess

©2016 American Hospital Association

